

Date / Time of Issue: Mon Dec 14 11:15:56 EST 2009

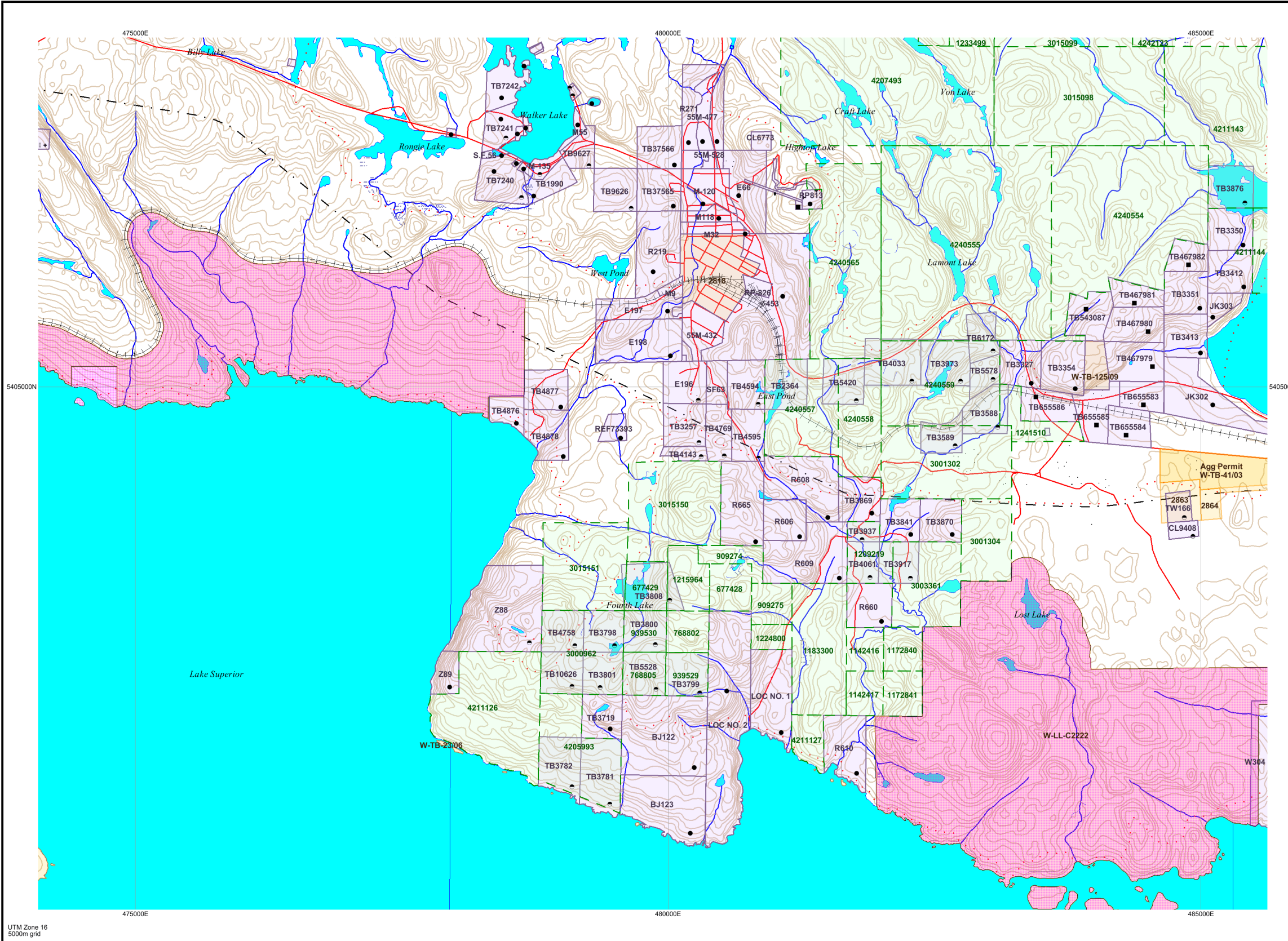
TOWNSHIP / AREA  
COPPER ISLAND AREA

PLAN  
G-0588

ADMINISTRATIVE DISTRICTS / DIVISIONS

Mining Division  
Land Titles/Registry Division  
Ministry of Natural Resources District

Thunder Bay  
THUNDER BAY  
NIPIGON

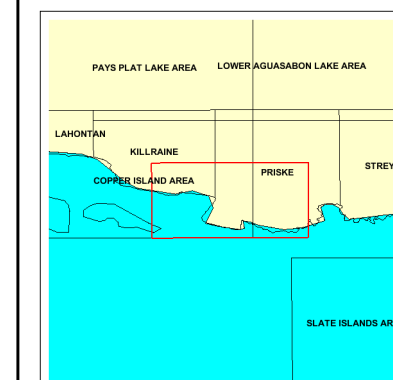


TOPOGRAPHIC

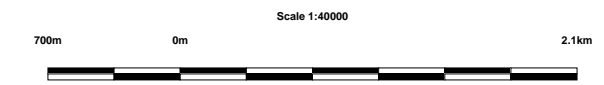
- Administrative Boundaries
- Township
- Concession, Lot
- Provincial Park
- Indian Reserve
- Cliff, Pit & Pile
- Contour
- Mine Shafts
- Mine Headframe
- Railway
- Road
- Trail
- Natural Gas Pipeline
- Utilities
- Tower

Land Tenure

- Freehold Patent
  - Surface And Mining Rights
  - Surface Rights Only
  - Mining Rights Only
- Leasehold Patent
  - Surface And Mining Rights
  - Surface Rights Only
  - Mining Rights Only
- Licence of Occupation
  - Uses Not Specified
  - Surface And Mining Rights
  - Surface Rights Only
  - Mining Rights Only
- Land Use Permit
- Order In Council (Not open for staking)
- Water Power Lease Agreement



- LAND TENURE WITHDRAWALS
- Areas Withdrawn from Disposition
  - Mining Acts Withdrawal Types
    - Surface And Mining Rights Withdrawn
    - Surface Rights Only Withdrawn
    - Mining Rights Only Withdrawn
  - Order In Council Withdrawal Types
    - Surface And Mining Rights Withdrawn
    - Surface Rights Only Withdrawn
    - Mining Rights Only Withdrawn
  - IMPORTANT NOTICES



LAND TENURE WITHDRAWAL DESCRIPTIONS (list may not be complete)

Identifier	Type	Date	Description
2762	Wsm	Jan 1, 2001	RESERVE FLOODING RIGHTS TO CONTOUR 905 FT G.S.C. ON AGUASABON RIVER & BIG DUCK CREEK FOR H.E.P.C. OF ONTARIO. FILE 132730
2818	Wsm	Jan 1, 2001	STAKING MAY BE RESTRICTED BY SEVERAL SECTIONS OF MINING ACT - PLEASE CONSULT PROV. REC. OFFICE.
2863	Wsm	Jan 1, 2001	SURFACE RIGHTS WITHDRAWN FROM STAKING PERMANENTLY BUFFER ZONE LANDFILL SITE. ORDER WNCR 18/82 DATED NOV. 24/82.
2864	Wsm	Jan 1, 2001	LAND USE PERMIT FOR SLUDGE STORAGE
W-LL-C2222	Wsm	Feb 27, 2004	<a href="http://www.mndm.gov.on.ca/mines/lands/livleg/borwest/2004orders/feb/withdrawals/wc2222-04_e.asp">W-LL-C2222 OMT M&S withdrawal S.35 Mining Act RSO 1999, 27/02/04 Boundary generally depicts area withdrawn Click to view actual area </a>
W-LL-C2222	Wsm	Feb 27, 2004	<a href="http://www.mndm.gov.on.ca/mines/lands/livleg/borwest/2004orders/feb/withdrawals/wc2222-04_e.asp">W-LL-C2222 OMT M&S withdrawal S.35 Mining Act RSO 1999, 27/02/04 Boundary generally depicts area withdrawn Click to view actual area </a>
W-LL-C2245	Wsm	Feb 28, 2004	<a href="http://www.mndm.gov.on.ca/mines/lands/livleg/w2004-04_e.asp">W-LL-2004/04 OMT M&S withdrawal S.35 Mining Act RSO 1999, 28/02/04 Boundary generally depicts area withdrawn Click to view actual area </a>
W-TB-125/09	Wsm	Dec 4, 2009	<a href="http://www.mndm.gov.on.ca/mines/lands/withreop/orders2009/wtb125-09.pdf">W-TB-125/09 M&S withdrawal S.35 Mining Act RSO 1999, December 4, 2009 Click to link to withdrawal order</a>
W-TB-23/06	Wsm	Mar 31, 2006	<a href="http://www.mndm.gov.on.ca/mines/lands/withreop/orders2006/wtb23-06_e.asp">W-TB-23/06 M&S withdrawal S.35 Mining Act RSO 1999, March 8th, 2005 Click to link to withdrawal order</a>
W-TB-41/03	Wm	Sep 15, 2003	W-TB-41/03 Sept. 15/2003 M.R.O. Withdrawn to allow MTO to evaluate the aggregate potential.

Those wishing to stake mining claims should consult with the Provincial Mining Recorders' Office of the Ministry of Northern Development and Mines for additional information on the status of the lands shown hereon. This map is not intended for navigational, survey, or land title determination purposes as the information shown on this map is compiled from various sources. Completeness and accuracy are not guaranteed. Additional information may also be obtained through the local Land Titles or Registry Office, or the Ministry of Natural Resources.

The information shown is derived from digital data available in the Provincial Mining Recorders' Office at the time of downloading from the Ministry of Northern Development and Mines web site.

General Information and Limitations  
 Contact Information:  
 Provincial Mining Recorders' Office  
 Willet Green Miller Centre 933 Ramsey Lake Road  
 Sudbury ON P3E 6B5  
 Home Page: [www.mndm.gov.on.ca/MNDMMINES/LANDS/mlsmnpge.htm](http://www.mndm.gov.on.ca/MNDMMINES/LANDS/mlsmnpge.htm)

Toll Free  
 Tel: 1 (888) 415-9845 ext 5742  
 Fax: 1 (877) 670-1444  
 Map Datum: NAD 83  
 Projection: UTM (6 degree)  
 Topographic Data Source: Land Information Ontario  
 Mining Land Tenure Source: Provincial Mining Recorders' Office

This map may not show unregistered land tenure and interests in land including certain patents, leases, easements, right of ways, flooding rights, licences, or other forms of disposition of rights and interest from the Crown. Also certain land tenure and land uses that restrict or prohibit free entry to stake mining claims may not be illustrated.